

Publishing Geodata

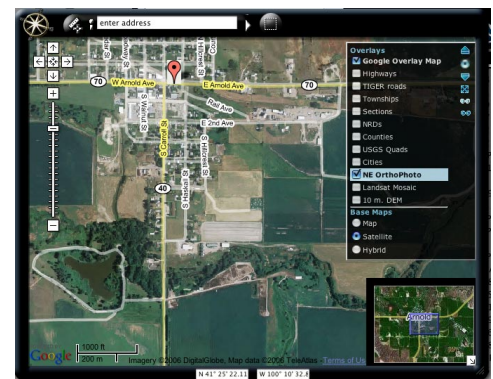
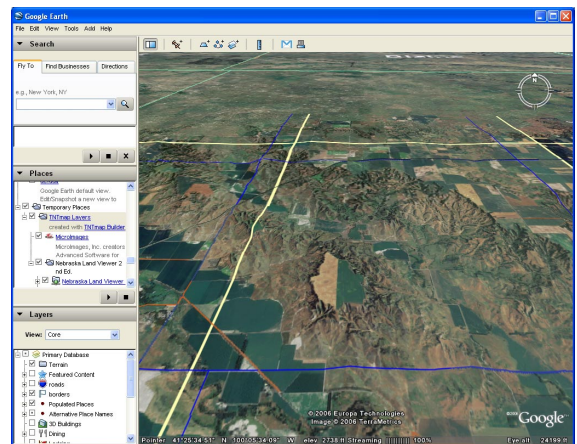
You can publish your geodata layers or atlas of layers on DVD or portable hard drive and recipients can use MicrolImages' FREE visualization application (TNTAtlas) to view it and apply custom GIS tools you added with a geospatial scripting language. You can ePublish your geodata on the Internet or a private local network using MicrolImages' server product (TNTserver). You can view and use your map and image layers or any others published by a Web Map Service (WMS) using MicrolImages' FREE TNTmap or any other WMS-compliant client. The geodata you publish can range from a simple layer to a group of layers or a geographically interrelated atlas of layers and groups. The layers used can be in a wide variety of formats and can present a logical collection of spatial data and metadata by scale, location, and so on. After you have assembled an atlas using MicrolImages' flagship product (TNTmips), it can be published by any or all of the methods noted above.

Publishing Geodata Highlights:

- Create atlases that automatically open from CD/DVD
- Add custom tools specific for the geodata published with TNTAtlas (e.g. search entire state to zoom to designated city, county, Natural Resource District, and so on)
- Create atlases that incorporate geodata in any of the numerous external formats supported for direct use (e.g., shapefiles, TIFF, JPEG2000, MrSID, DXF, DGN among others)
- Use compressed image tilesets for fast display over network or from CD/DVD
- Use compressed tilesets to fit a terabyte of raster geodata on a DVD for distribution
- Restrict use of data using passwords if desired
- Easy installation of TNTserver with management interface for intranet/Internet publishing
- Use MicrolImages' server managing software (TNTserver Manager) to set up atlases and atlas access
- Select WMS layers with MicrolImages' WMS browser (TNTmap Builder) with direct links for display in Google Maps, Google Earth, TNTmap Open, TNTmap Viewer, or World Wind
- Select WFS layers with TNTmap Builder for display in Google Maps
- Link to URLs or launch other applications for viewing associated information
- Use TNTAtlas to launch 3D simulated fly-by of same geodata on Windows platforms
- Provide bookmarks on your web site to launch pre-chosen layers in a designated viewer
- Make anaglyph and other 3D stereo viewing modes available



DVD-published atlases that autorun with custom tools



[Electronic Atlas tutorials](#)

[Technical Guides on TNTAtlas/TNTserver/TNTmap](#)