

## System

# Select Objects for Use

Version 2010 of the TNT products utilizes a new file and object selection interface based on that used for Windows 7 and Vista. The new Browse tabbed panel in the Select Objects window lets you navigate quickly to any directory level and choose objects for display or processing. You can now also select Tileset Description (\*.tsd) files and directories containing tilesets in processes where they are appropriate. File selection in earlier versions allowed movement up or down in the file hierarchy relative to the current location only. The new approach lets you move up or down from any level of the path. The selection window automatically provides the paths for your most recent file/object selections, and you can also create a list of favorite folders to select folders/files/objects from. See the Technical Guide entitled *System: Create Output Objects* for features related to saving process output.

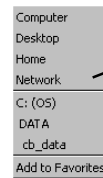
## Navigate Bar

The Navigate Bar not only displays the path to the folder or file with contents that are currently shown in the top list of the window but also includes controls for you to make alternative selections from any of the levels shown along the path and move up one level. The leftmost entry in the Navigate Bar is one of four icons: computer, drive, folder, or file. Clicking on this icon regardless of its shape moves you **up one level** in the directory structure. The arrowhead immediately to the right of this icon drops down a menu that always includes Computer, Desktop, Home, and Network (Network is not a choice on the Mac menu). The entries below these depend on your current level in the directory structure and whether you have added to your Favorites list. Any Favorites you have added are shown immediately below the four destinations named above.

**Arrowheads.** Each arrowhead on the Navigate Bar drops down a menu that provides the contents of the level of the directory hierarchy shown to the left of the arrow. For example, the menu for the arrowhead to the right of a drive letter or name will list all the folders and files at the top level on that drive. If there is a path entry to the right of the arrowhead, that entry will be included on the menu along with all other folders and files at that level. As you move down through the directory hierarchy, there will be an arrowhead to the right of the deepest level only as long as folders are still contained within.

The menu that drops down from the arrowhead next to the icon at the left of the Navigate bar has some additional entries that are not found on other arrowhead menus (shown below). It lists all the components of the current path above the last choice,

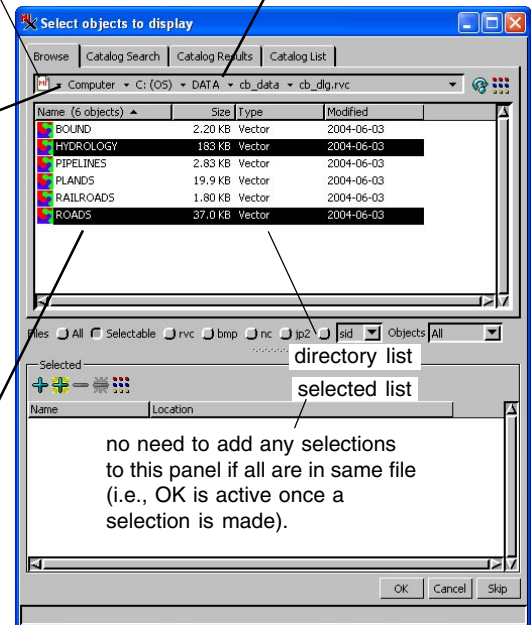
click on this icon to move up one level in the directory structure



arrowheads in the path provide a drop-down menu that includes the directory level to the right

use click, ctrl-click for discontinuous selection (click, shift-click for continuous selection)

Navigate Bar

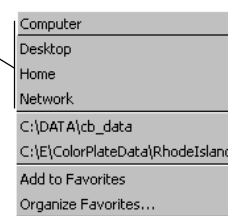


the contents of which are currently shown in the list panel, as an alternative method to jump to these levels.



The Add to Favorites choice appears only on the menu for the leftmost arrowhead in the Navigate Bar and only if your current directory position is not already on the favorites list. An Organize Favorites choice is shown after you have added favorites and enables you to rearrange, rename, or delete entries on the Favorites list.

These choices always appear on the leftmost arrowhead menu.



Favorites listed here

only shown if Favorites have been added

There is a larger arrowhead at the right end of the Navigate bar. This arrowhead provides a list of your recent path choices while using TNT (see the following Recent Menu discussion).

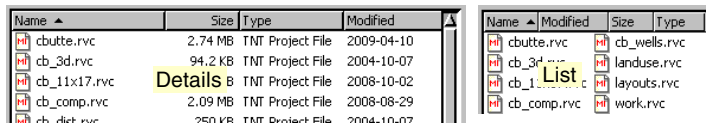
**Folder/File Names.** The drive, folder, and file names between the arrowheads also assist in navigation. Clicking on one of these names takes you to the associated level in your storage hierarchy. It lists the same choices revealed on the menu that drops down from the arrowhead to the right of the name.

**Recent Menu.** As mentioned above, the larger arrowhead at the far right of the Navigate bar provides a list of the 20 last paths you selected objects from. This list is updated when the

Select Objects window is closed. The recent menu presents the same choices in all TNT processes.

## Other Icons

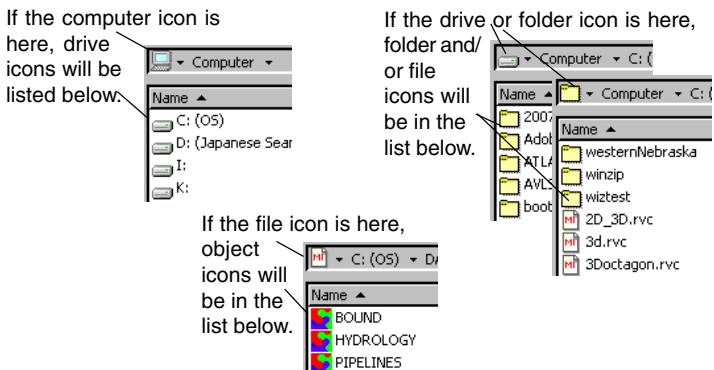
There are two icons to the right of the Navigate Bar: Refresh and Views. The Refresh icon reloads the currently shown list so that any additions made to the current directory level will show in the list. The Views icon has a drop-down menu for you to select how you want the items in the list below to appear. When you choose Details, which is the default, each item in the directory occupies one line in the selection window and additional information is shown. When you choose List, the items in the current directory level are displayed in columns when there are more items than will fit in the list area of the window. If there are more items in the directory level than will fit in three columns, use the horizontal scroll bar to show additional items.



## Directory List

The top list on the Browse tabbed panel of the Select Objects window shows the contents of the last item in the Navigate Bar's path. The icon at the left of the Navigate Bar indicates the directory level shown. For example, if the last item is a Project File, the objects in that file are shown in the list.

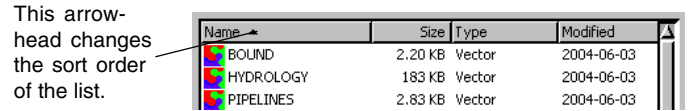
**Selecting Files and Objects.** Multiple files or objects can be selected from this list by using key and click combinations: click, shift-click selects all objects between the two you clicked on and click, ctrl-click selects multiple individual objects in the list without selecting the objects between them. These objects need not be added to the Selected list unless you want to select from a different Project File or directory level.



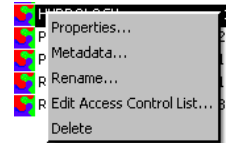
**Sorting.** The headings in the directory list let you change the column that is used to sort the list or change the order in which the list is sorted. Clicking on the heading for a column not currently used for sorting resorts the list based on the selected column. Clicking on the heading of a column already used for sorting, changes the sort order. When the sort arrowhead points up, the list is sorted in ascending order (A to Z, smallest to

largest, and oldest to newest) and when it points down, the list is sorted in descending order. The sort order arrowhead moves to the column heading that is currently being used for sorting. Sorting reverts to ascending order using the name when you switch directory levels.

The column headings remain when you view the list using the Views/List option so that you can sort based on their values even though they are not shown.



**Right Mouse Button Menu.** If you right-click on an object/file/folder in the directory list after you highlight an entry, you get a menu that provides access to a number of functions depending on the current directory level and/or file type. The list shown is for Project Files and objects. Other file types that can be directly used by TNTmips (e.g., TIFF and JP2), have the same choices with the exception of Edit Access Control List. Folders have Rename and Delete choices on this menu as do file types not supported for use in the TNT products (e.g., Word Files), which also have Properties as a choice. The Properties provided for Project Files and objects are extensive. The properties reported for non-supported file types are limited to the directory path for the file.

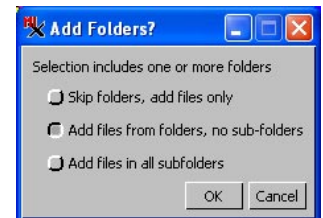


## Selected Panel



The Selected panel in the Select Objects window consists of five icons and a list of objects selected for the process you are using. If you are selecting objects from a single file or selecting a single file, it only needs to be highlighted in the directory list, it does not need to be added to the Selected list.

**Icons to Add/Remove and Change Views.** The Add icon is used to Add the objects/files highlighted in the directory list to the Selected list. It is not active unless at least one object/file is selected in the directory list. The Add All icon adds all the objects in a Project File or all the files in a folder without any being highlighted in the directory list. If there are one or more folders in the selected items, you get an Add Folders dialog that asks what you want to do. Your last choice from the first two options is retained for the next time selection involves folders.



The Remove icon is only active if an item is highlighted in the Selected list. The Remove All icon removes all items from the Selected list whether or not any are highlighted. The Views icon behaves just as described in the Other Icons section above to change how the Selected list is displayed.