

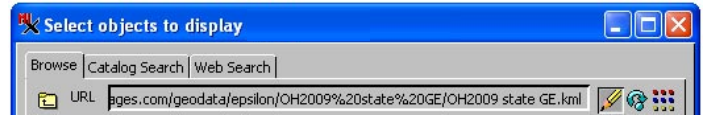
# Geomashup Sidebar for Google Earth

A Geomashup for Google Earth launches a browser window with standard zoom and pan controls and a sidebar for custom controls. The sidebar provides a text entry field to fly to a location, an overlay legend and selection list, and a customizable HTML pane. Layers in a Google Earth geomashup may be tilesets prepared using the Google Earth structure and/or KML interpretations of vector objects. Tilesets in the Google Earth structure are also referenced by KML files. These tileset-reference KML files are created by all TNT processes that generate these tilesets. Google Earth has different optimal tile specifications for its Super-Overlay tiles than Google Maps and Bing Maps (see the Technical Guide entitled *Tilesets: Google Earth Structure*). Google Earth has its own base map defined so the Base Maps panel is inactive in the Assemble Geomashup process.

## Legend/Layer Controls

The tileset name and KML overlay file names are used in the sidebar for the mashup legend for each overlay you add to the list. The default tileset name is the title in the KML tileset link file or the name of the KML file if the file does not contain a title. You can change this default name in the Layer Name field on the Overlays tabbed panel to the text you want to appear for the layer name in the sidebar. The overlay at the top of the list will be the top layer in the the Google Earth legend and view of the geomashup.

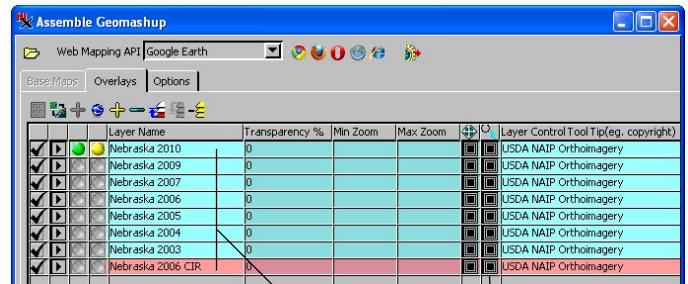
Google Earth overlay tilesets added to a mashup can be turned on and off in the legend in a mutually exclusive fashion using radio buttons (i.e., only one overlay at



To add a Google Earth tileset not in MicroImages' list to your Geomashup, click on the Add Remote KML icon in the Assemble Geomashup window and click on the Enter Path/URL icon in the Select objects to display window. You can then paste or type the URL for the KML file associated with the tileset into the field to the left of the icon. Then press <enter> to add it to the list.

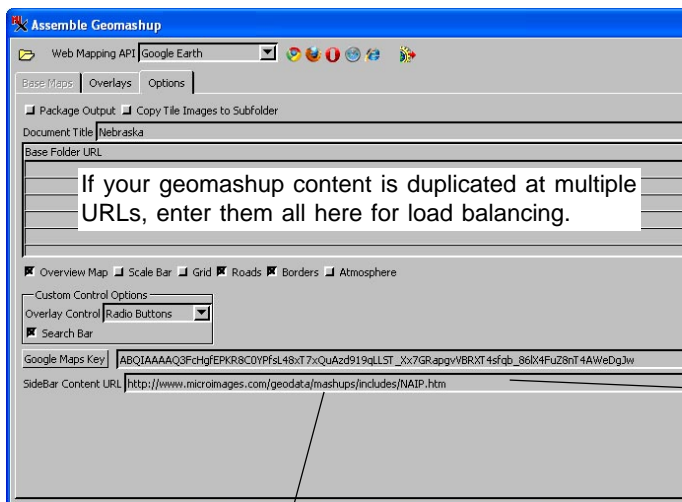
a time can be selected using this layer control in the legend). Clicking on the radio button in the sidebar for a layer in the legend will switch to show only that overlay tileset. Switching overlays using the radio button **will not change the current scale or viewpoint** in the Google Earth view. Clicking on the name in the legend will switch to the new layer and automatically select the corresponding radio button, but will return the Google Earth view to the startup viewpoint and scale for the overlay.

Check boxes can be used in the legend list in the sidebar

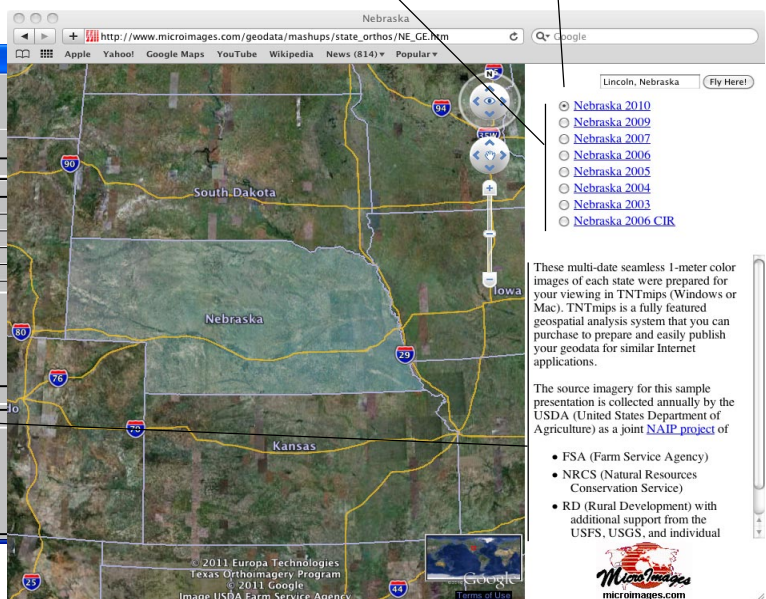


Controls in list are the same as for other APIs.

provides radio buttons when on



This html file provides the information shown below the layer names in the Google Earth sidebar.



instead of radio buttons to turn overlay tilesets on and off. Check boxes are not mutually exclusive and every overlay that is checked on for viewing will be added as an overlay to the Google Earth view. An overlay tileset that is checked on will obscure any lower overlay that covers the same area that is also checked on in the sidebar where its tiles are opaque (i.e., where its tiles are JPGs). Areas where it uses PNG tiles will permit lower layer tilesets concurrently checked on to show though except where features or edges have been rendered into PNG tiles. For example, the transparent areas that complete the rectangular tiles for an irregular opaque area of a tileset will permit the base layer or lower layer to show through with an accurate boundary as in Nebraska eastern edge (shown on preceding page). Similarly a road network rendered as an all PNG tileset and checked on for display as an overlay will permit an image tileset lower in the legend order, but also checked on, to show through as a reference background. For other geomashup control options,

see the Technical Guide entitled *Geomedia Publishing: Geomashup Control Options*.

## Custom HTML Pane

The sidebar pane below the legend is created by an HTML page whose content and behavior can be whatever you wish. You add your custom content by pasting the URL for it into the Sidebar Content URL field on the Assemble Geomashup Options tabbed panel. You can set the width of the sidebar to the right of this field on the Options panel. In the example shown below, the content of this pane is simple HTML text that describes the overlay tileset layers in this example. Only the link is used in the mashup to access the content of this pane. Thus it can be located wherever you wish on the web and provide your custom content or actions. In this simple example it presents a new link to the site where the source images used to create the overlay tilesets can be downloaded. Use this scrolling panel and your HTML to provide instructions, new tools, new mashups, advertisements, whatever you wish.

### Sample HTML file to specify sidebar content (right)

The HTML shown below creates the sidebar text and link used by MicroImages for the multi-year, US State 1-meter orthoimage geomashups. You can use this HTML file as a template and modify it to fit your purposes or use any HTML file desired. Your HTML can include graphics and links that you want to present in the sidebar.

```
<div style="margin:0px;padding:0px 3px 0px 3px;">
  These multi-date seamless 1-meter color images of
  each state were prepared for your viewing in TNTmips
  (Windows or Mac). TNTmips is a fully featured geospa-
  tial analysis system that you can purchase to prepare
  and easily publish your geodata for similar Internet
  applications.
  <br /><br />
  The source imagery for this sample presentation is
  collected annually by the USDA (United States Depart-
  ment of Agriculture) as a joint <a href="http://
  datagateway.nrcs.usda.gov/" target="_blank">NAIP
  project</a> of
  <ul>
    <li style="padding:3px 3px 3px 6px;text-in-
    dent:-10px;text-align:left;">FSA (Farm Service
    Agency)</li>
    <li style="padding:3px 3px 3px 6px;text-in-
    dent:-10px;text-align:left;">NRCS (Natural Resources
    Conservation Service)</li>
    <li style="padding:3px 3px 3px 6px;text-in-
    dent:-10px;text-align:left;">RD (Rural Development)
    with additional support from the USFS, USGS, and indi-
    vidual states.</li>
  </ul>
</div>
```

These multi-date seamless 1-meter color images of each state were prepared for your viewing in TNTmips (Windows or Mac). TNTmips is a fully featured geospatial analysis system that you can purchase to prepare and easily publish your geodata for similar Internet applications.

The source imagery for this sample presentation is collected annually by the USDA (United States Department of Agriculture) as a joint [NAIP project](#) of

- FSA (Farm Service Agency)
- NRCS (Natural Resources Conservation Service)
- RD (Rural Development) with additional support from the USFS, USGS, and individual states.