

Show Places Pane—Save Locations

The Show Places pane is one of several quick use panes that can be optionally shown and used via the View window sidebar. Each of these panes and the entire sidebar can be opened and closed with a single mouse click. The optional Legend, Magnifier, and Locator sidebar panes are discussed in the Technical Guide entitled *Spatial Display: View Window Sidebar and Magnifier*. The Show Places pane lets you zoom to the location of your choice using a variety of methods. One of these methods provides access to frequently-used views that you have named and saved.

The Saved Locations operations

- Save the extents of the current view with the name of your choice for later selection,
- Create folders for organizing your saved locations, and
- Let you zoom to the selected location by clicking on its entry in the list.

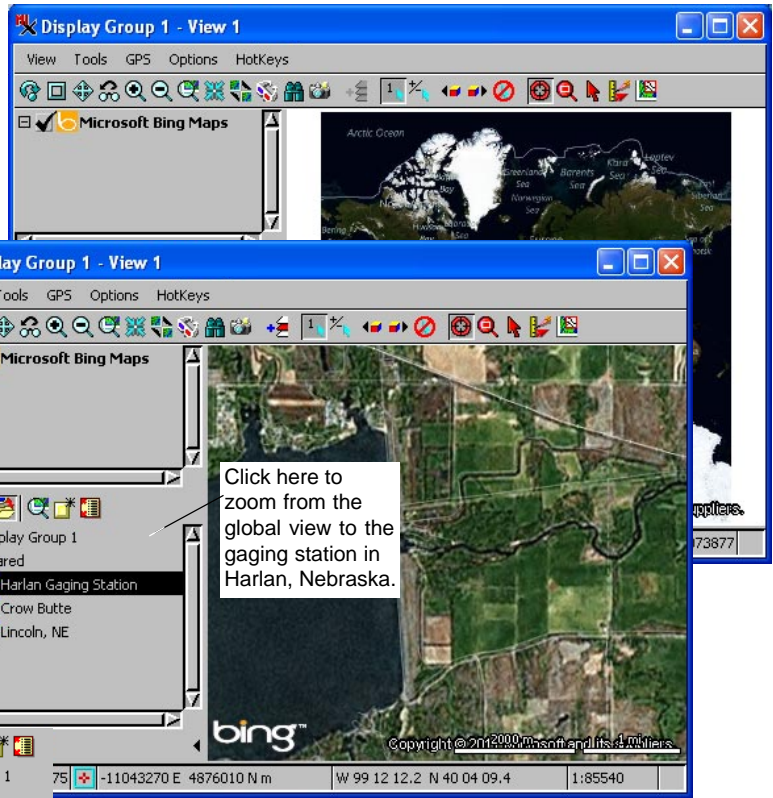
The operation you select determines the icons shown and associated functions available.

Saved Locations

Two folders are listed by default below the operations in the Show Places pane when you choose the Saved Locations option. One is specific for the group or layout for the View window that shows the folder in its legend and the other has contents available for all open groups and layouts. The saved locations in the folder specific to an individual group or layout are temporary for the current display session unless the group/layout is saved. When a saved group or layout with saved locations is opened in a subsequent Display session, the locations saved are available under that group/layout in the associated Saved Locations folder.

The contents of the Shared folder are maintained from one display session to the next and are available for all Views opened. Some of your saved locations may not fall within the extents of the layers displayed for a particular View. These locations will appear dimmed in the list and cannot be zoomed to unless a layer with larger extents is included in the View and the *Exclude from group extents* option is toggled off on its right mouse button menu. To zoom to any location on the list, add the Microsoft Bing Maps layer and include its extents in the view. Be sure to transfer settings when installing a new version of the TNT products to maintain your saved locations from one installation to the next.

The Saved Locations operation has two associated action icons (Add Current View and Add Folder) and a Preferences icon. To zoom to a saved location, simply click on its entry in the list.



Although you can zoom to any location in the Shared folder from any open view, only the view window in which you click on the entry is repositioned/zoomed to the selected location.

Add Current View. When you click on the Add Current View icon, a window opens so that you can assign a name to the extents of the current view for use in later selection. The named location is added to the list for the highlighted folder or, if neither folder is highlighted, to the Shared list.

Add Folder. Just as when adding the extents of the view as a saved location, a window opens so that you can name your new folder to provide for organization of your saved locations. The new folder is added as a subfolder for the highlighted folder in the list or as a subfolder of the Shared folder if nothing is highlighted in the list.

Preferences. The single preference for the Saved Locations operation is whether or not to show results outside the extents of the current group(s). As with the Bing Maps Service operation (see the Tech Guide entitled *Spatial Display: Show Places Pane—Bing Maps Service*), layer names are shown in gray in the Saved Locations list if outside the extents of the current group(s).

